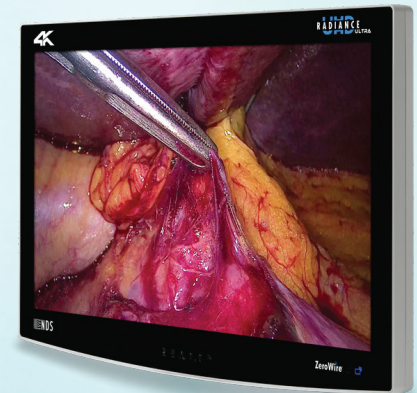




RADIANCE® ULTRA 32" 4K ZEROWIRE® DUO

- *First medical grade 4K display with embedded wireless technology*
- *All-in-one, dual-function, embedded transmitter and receiver*
- *Near to zero latency with superb image quality*
- *Interference immune 60 GHz transmission ensures in-room containment*
- *Intuitive, memory enabled pairing, enhances ease-of-use*
- *Security encrypted signal ensures patient privacy*
- *Benefits from the Radiance Ultra's color accuracy and brightness*



RADIANCE[®] ULTRA ZeroWire[®]

EXPANDING THE POSSIBILITIES IN 4K VISUALIZATION, WIRELESSLY

The ground-breaking Radiance Ultra 4K ZeroWire Duo display represents a technological leap forward in OR imaging solutions. With the adoption of 4K in today's digital OR, Radiance Ultra 4K ZeroWire Duo extends your imaging chain without the restrictions, safety concerns, and costs of a 4K cabling infrastructure. By integrating exclusive 60 GHz wireless technology into NDS' 4K imaging platform, a new gold standard in surgical visualization is attained.

ZeroWire's 60 GHz technology delivers a robust and reliable turn-key wireless video system. Dual-functionality has been achieved by embedding both transmitter and receiver into each display. Once linked, a pair of 4K ZeroWire Duo displays will auto-link after power cycles.

Beam steering antenna technology dynamically controls the wireless signal to avoid obstructions and optimize wireless performance even in the most challenging procedure room conditions. Free of perceivable latency or visible artifacts, the system provides the pristine 4K image quality that clinicians demand. The OR staff can benefit from enhanced safety and ergonomics by eliminating cables and enabling greater flexibility.

To experience the ultimate in cable-free wireless operation; combine the 4K ZeroWire Duo display with the NDS ZeroWire Mobile stand. This combination eliminates the need for all cabling thus reducing room turn around time.

TECHNICAL SPECIFICATIONS

WIRELESS

Frequency Range	60 GHz Band (57-64 Ghz)
Wireless Functionality	Transmit or Receive (Dual Function)
Wireless Video Inputs (In Tx Mode)	12G-SDI, HDMI, DisplayPort
Systems Latency (Tx to Rx)	Less than One Frame (<16 ms at 60Hz)
Wireless Transmission Range	30 feet (10 meters) Maximum
Number of Pairs Per Room	Up to Two Monitor Pairs
Pairing Method	Memory Enabled Pairing
Patient Privacy Data Protection	256-bit AES Encryption
Transmitter/Receiver Mode Control	Auto-Set Based on Input Source
Transmitter/Receiver Mode	LED Indicators on Front Bezel

IMAGE PERFORMANCE

Screen Size (Diagonal)	32.0 inches (813 mm)
Native Resolution (H x V)	3840 x 2160 (4K/UHD)
Aspect Ratio	16:9, UHD
Luminance	700 cd/m2 (Typical)
Contrast Ratio	1350:1 (Typical)
Medi-Match™ Calibration	BT.709, BT.2020 Emulation
Number of Colors	1.07 Billion (10-bit)
Color Gamut	149% of BT.709, 79% of BT.2020
Response Time	8 ms (Typical)

GENERAL

Input Power	24 Volts DC (Min. 21.6 Volts)
Dimensions (W x H x D)	30.7" x 20" x 3.4"/780 mm x 509 mm x 87 mm
Protective Front Panel	AR Coated, Chemically Strengthened Glass
Scratch Resistant Guarantee	Yes
Warranty	3 Years
Mounting	100 x 100 mm VESA, 200 x 100 mm VESA
Display Weight	28.6 lbs (13 kg)
Shipping Weight	45 lbs (20.5 kg)
Shipping Dimensions	36" x 9" x 29"/92 x 23 x 74 cm

ACCESSORIES

Included Accessories	24 VDC Power Supply, region appropriate AC power cord, Download Information for User Manuals
Optional Accessories	DC Power Extension Cables: 10 ft (90Z0287), 50 ft (90Z0288) RS-232 Adapter Cable - DB-9 to RJ11 (90Z0245) DVI Out to 5 Volt DC Cable (90Z0221)

CONNECTIVITY SIGNAL TYPE CONNECTOR FUNCTIONALITY

CONNECTIVITY	SIGNAL TYPE	CONNECTOR	FUNCTIONALITY
4K/UHD Inputs*	12G-SDI-1	BNC x 1	Can be Transmitted to Rx
	HDMI-1 (1.4b)**	HDMI Type-A	Displayed on Screen Only
	HDMI-2 (2.0)**	HDMI Type-A	Can be Transmitted to Rx
	DisplayPort-1	DisplayPort	Displayed on Screen Only
4K/UHD Outputs	12G-SDI-1	BNC x 1	Re-drive Only
	HD Inputs	DVI-D	Displayed on Screen Only
HD Outputs	DVI-D	DVI-D	Re-drive Only
Control Input	RS-232 Serial	RJ-11	Serial Command Interface

REGULATORY COMPLIANCE

ANSI/AAMI ES60601-1, CAN/CSA C22.2 No. 60601-1, EN 60601-1, EN 60601-1-2, Conflict Minerals, FCC Part 15 Class A, ICES-003, VCCI V-3, MDR 2017/745, Class I Medical Device, FDA Class II, FDA 510(K) Pending, including RF module model SII-SK63102 and SII-SK63101, (RE-D) Directive 2014/53/EU, EN 302-567 V2.1.1, EN 301 489, CE, FCC ID: UK2-SII-SK63101 or 2ASUJ-SII-SK63101 and UK2-SII-SK63102 or 2ASUJ-SII-SK63102, IC ID: 6705A-SIISK63101 or 25001-SII-SK63101 and 6705A-SIISK63102 or 25001-SII-SK63102, 007-AA106, 007-AA107

ORDERING INFORMATION

90R0130 Radiance Ultra 32" 4K ZeroWire Duo

CONTACT INFORMATION

NDS Global Headquarters

100 Paramount Drive, Suite 101
Sarasota, FL 34232 USA 🇺🇸
www.ndssi.com
+1 888 982 4469
info@novanta.com

Asia Pacific

Novanta Japan

East Square Omori
6-20-14 Minamioi
Shinagawa-ku
Tokyo 140-0013, Japan
+81 3 5753 2466
info@ndssi.jp

Europe

Novanta Europe

Werk 4
92442, Wackersdorf
Germany ^{EC REP}
+49 9431 7984-0
info.novanta-europe@novanta.com

NDS China Office

Oriental Media Center
Suite 1510, Tower C
No.4, Guang Hua Road
Chao Yang District
Beijing, 100026, China
+86 10 8559 7859
info@ndssi.com.cn

* 4K/UHD capable inputs also support HD resolutions

** HDMI inputs support DVI-D signals up to 1080p via a DVI to HDMI adapter cable (not included)