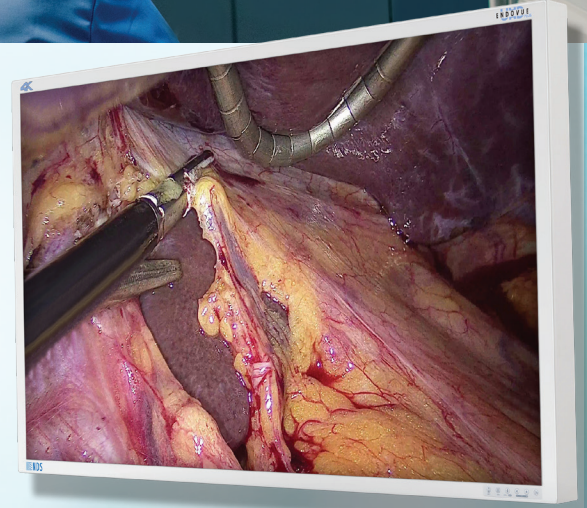


**NDS**  
A Novanta Company



## ENDOVIEW® PLUS 4K 55"

- *State-of-the-Art 55" 4K medical grade display*
- *Supports surgical cameras and video signals*
- *Low latency for best possible visualization*
- *High brightness LED backlight (500 Nits)*
- *Emulated BT.2020 colorimetry*
- *PiP (Picture in Picture) functionality*
- *Anti-Reflective screen protection*



**ENDOVIEW**  
PLUS

### COST-EFFECTIVE 4K VISUALIZATION

The new EndoVue 4K 55" display delivers an unprecedented level of detail, sharpness and clarity for a fraction of the price of competitive models. This incredible performance is achieved by designing and building with the latest in video chips, LCD panels and by incorporating connectivity options and housing features that are specifically beneficial for operating rooms.

The high-luminance LED backlight produces 500 nits of brightness to clearly enhance the anatomy during procedures. Compatibility with all of today's 4K surgical cameras and imaging devices is assured with a choice of inputs from 12G-SDI, Quad-Link SDI, 3G-SDI, DisplayPort and HDMI 2.0 and color matching in BT.709 or BT.2020.

The screen size of 55" provides an increased viewing range, delivering a high level of detail when viewed from both close and far distances. This delivers superb close proximity viewing and enhanced visibility to the entire surgical team when wall mounted.

Glare reducing anti-reflective protective front panel and IPX6 ratings for protection from dust and liquid ingress assisting effective infection control measures.

From an integration point of view, the EndoVue 4K 55" includes RS232 control for monitor settings and switching which includes PiP feature that has 8 different settings. There is also a 5 and 12V DC 2A output to power local accessories or devices.

## TECHNICAL SPECIFICATIONS

### IMAGE PERFORMANCE

Screen Size (Diagonal)	55.0 inches (1397 mm)
Native Resolution (H x V)	3840 x 2160 (4K/UHD)
Aspect Ratio	16:9, UHD
Luminance	500 cd/m <sup>2</sup> (Typical)
Contrast Ratio	1100:1 (Typical)
Color Calibration	BT.709, BT.2020 Emulation
Number of Colors	1.07 Billion
White Point	6500K Color Temperature
Response Time	14 ms (Typical)

### GENERAL

Input Power	100 to 240 VAC ± 10%, 50/60 Hz
Dimensions (W x H x D)	49.7in (W) x 29.1in (H) x 2.8in (D) / 1262mm (W) x 739mm (H) x 72mm (D)
Protective Front Panel	AR Coated, Acrylic Optical Filter
Warranty	2 Year
Mounting	500 x 100 mm VESA
Display Weight	71.2 lbs (32.3 kg)
Shipping Weight	93.7 lbs (42.5 kg)
Shipping Dimensions	1455mm (L) x 210mm (W) x 923mm (H)
Green Compliance	REACH, RoHS-3, WEEE, Conflict Minerals

### ACCESSORIES

Included Accessories	Region appropriate AC power cord, Download Information for User Manuals
----------------------	--

CONNECTIVITY	SIGNAL TYPE	CONNECTOR
4K/UHD Inputs*	12G-SDI/Quad-Link SDI (Optional)	BNC x 1/BNC x 4
	HDMI-1 (2.0)**	HDMI Type-A
	HDMI-2 (2.0)**	HDMI Type-A
	DisplayPort-1	DisplayPort
4K/UHD Outputs	12G-SDI/Quad-Link SDI (Optional)	BNC x 1/BNC x 4
	12G-SDI-2	BNC x 1
HD Inputs	3G-SDI x 4 (Optional)	BNC x 4
HD Outputs	3G-SDI x 4 (Optional)	BNC x 4
Control Inputs	RS-232 Serial Control	RJ-11
Power Outputs	5 Volts DC Output 2 Amps	CUI PJ-019
	12 Volts DC Output 2 Amps	CUI PJ-096h

### REGULATORY COMPLIANCE

ANSI/AAMI ES60601-1, CAN/CSA C22.2 No. 60601-1, CAN ICES-3(B)/NMB-3(B), FCC Class B, EN60601-1, EN60601-1-2, CE, MDR 2017/745, EAC, CCC (Pending), Class I Medical Device, IPX6 front

### ORDERING INFORMATION

90K0091	EndoVue Plus 4K 55"
90K0092	EndoVue Plus 4K 55", 12G-SDI, Quad-Link SDI

### CONTACT INFORMATION

#### NDS Global Headquarters

100 Paramount Drive, Suite 101  
Sarasota, FL 34232 USA 🇺🇸  
www.ndssi.com  
+1 888 982 4469  
info@novanta.com

#### Europe

**Novanta Europe**  
Werk 4  
92442, Wackersdorf  
Germany EC REP  
+49 9431 7984-0  
info.novanta-europe@novanta.com

#### Asia Pacific

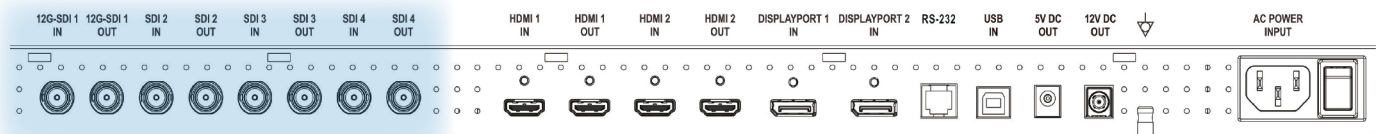
#### Novanta Japan

East Square Omori  
6-20-14 Minamioi  
Shinagawa-ku  
Tokyo 140-0013, Japan  
+81 3 5753 2466  
info@ndssi.jp

#### NDS China Office

Oriental Media Center  
Suite 1510, Tower C  
No.4, Guang Hua Road  
Chao Yang District  
Beijing, 100026, China  
+86 10 8559 7859  
info@ndssi.com.cn

### ONLY AVAILABLE FOR 90K0092



### STANDARD ON 90K0091 AND 90K0092

\* 4K/UHD capable inputs also support HD resolutions

\*\* HDMI inputs support DVI-D signals up to 1080p via a DVI to HDMI adapter cable (not included)

NDS Quality System  
ISO 13485 FDA Registration #2954921  
Document 7250006 Rev. C