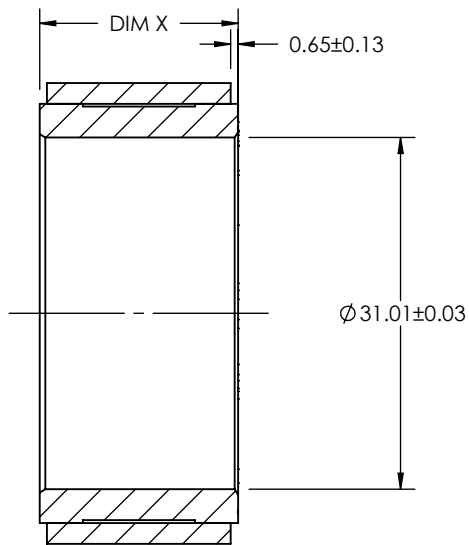
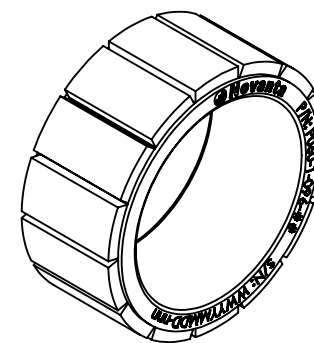
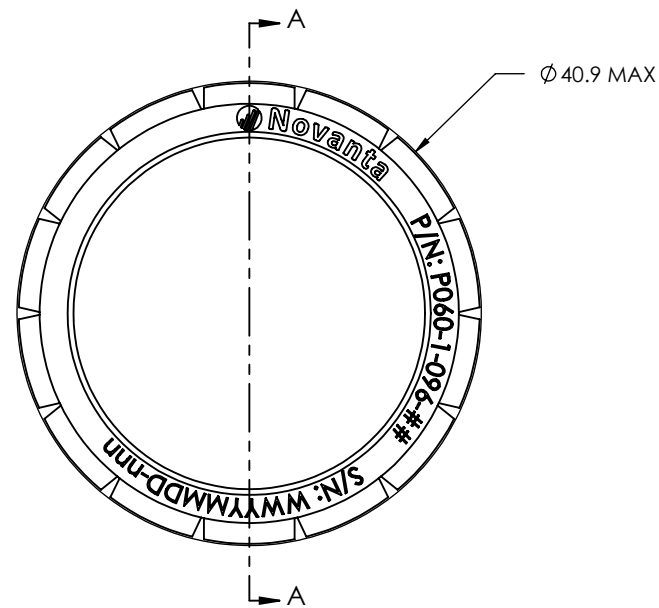


TABULATION BLOCK	
PART NUMBER	DIM X
P060-1-096-01	17.5 ± .05
P060-1-096-02	30.0 ± .05
P060-1-096-03	55.0 ± .05



**SECTION A-A**



NOTES: (UNLESS OTHERWISE SPECIFIED):

1. ROTOR MOUNTING REQUIREMENTS, REFER TO P060-1-051-01 DOCUMENT
2. ESTIMATED MASS AND OTHER SPECIFICATIONS REFER TO P060-1-052-01 DOCUMENT.

REV	DCN	DESCRIPTION OF CHANGE	DATE	SIGN
1	007587	INITIAL RELEASE	2020-FEB-10	ARL

**CONFIDENTIAL**  
 THIS DRAWING CONTAINS PROPRIETARY INFORMATION OF CELERA MOTION AND MAY NOT BE IN WHOLE OR IN PART, DUPLICATED OR DISCLOSED OR USED FOR MANUFACTURE OF ANY PART. DISCLOSED HEREIN WITHOUT THE PRIOR WRITTEN PERMISSION OF CELERA MOTION.

**Celera** A Novanta Company  
 MOTION Company

	DRAWN IAW ASME Y14.5-2009 X. ± 1.25 X.XX ± 0.125 X.X ± 0.25 X.XXX ± 0.0125 ANGULAR: X ± 1°	UNITS <b>MM</b>
<b>TITLE: ROTOR INTERFACE DRAWING</b>		
MATERIAL: N/A TREATMENT: N/A SURFACE FINISH: N/A	DRWN: A. LARKEY 2/5/2021 CHKD: S. DAWSON 2/5/2021 APPVD: S. DAWSON 2/5/2021	DRAWING NUMBER: <b>P060-1-096-XX 1</b> SCALE: 1:1 SIZE: A SHEET 1 of 1